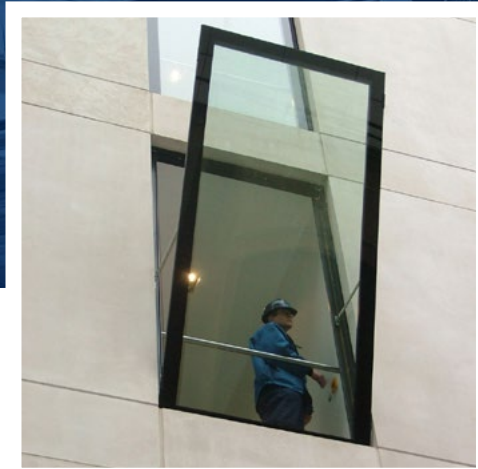


# Williaam Cox Brakel® Inova



## Product Overview

SHEV Application



Manufacturer	Brakel (www.brakel.com)
Type	Williaam Cox opening light, type Brakel® Inova
Description	Opening light, controls completely concealed within the construction when closed, suitable for ventilation purposes
Operation	24Vdc supply (M24) 24Vdc supply + emergency supply batteries (M24FS) 24Vdc supply + fire switch (MB24) 24Vdc supply + emergency supply batteries + fire switch (MB24FS)
Frame	Thermally separated
Glazing	To match glass wall construction / single laminated glass (type **) / insulated glass (type **) / sandwich panel (type **) total glazing thickness 6-43mm
Flange sizes (w x l)	*** x *** mm (identical)
Opening angle	*** °
Hinge side	Bottom
Installation	90° (installation in facades/glass walls)
Aerodynamic flow	*** m2
Installation	Installation in glass roof construction / glass wall construction
Protection	To match glass roof construction / to match glass wall construction / enamel finish with *** layer polyester, layer thickness *** mu, in standard RAL colour (group ***)
Air-tightness	EN 1026: 600 Pa / EN 12207: class 4
Water tightness	EN 1027: 600 Pa / EN 12208: class 9a

# Smoke Ventilators

## Williaam Cox Brakel® Inova

Resistance to varying load	EN 12211: 600 Pa (=P2), strength 1800 Pa EN 12210: class 3
Acoustic values	36 dB with insulated glass type 8-20-6.6.2 36 dB with sandwich panel 40 mm
Test	EN 12101-2
Important	To satisfy guarantee conditions opening light must be closed automatically during rain and high winds (> 14 m/s). Installation of a rain sensor and wind speed meter is therefore essential.

## Product Overview

SHEV Application



Manufacturer	Brakel (www.brakel.com)
Type	Williaam Cox opening light, type Brakel® Inova opening light, controls completely concealed within the construction when closed, suitable for ventilation purposes
Description	Opening light, controls completely concealed within the construction when closed, suitable for ventilation purposes
Operation	24Vdc supply (M24)
Frame	Thermally separated
Glazing	To match glass wall construction / single laminated glass (type **) / insulated glass (type **) / sandwich panel (type **); total glazing thickness 6-43mm
Flange sizes (w x l)	*** x *** mm (identical)
Opening angle	*** °
Hinge side	top / bottom / side
Installation	90° (installation in facades/glass walls)
Aerodynamic flow	*** m2
Installation	Installation in glass roof construction / glass wall construction
Protection	To match glass roof construction / to match glass wall construction / enamel finish with *** polyester layer, layer thickness *** mu, in standard RAL colour (group ***)
Air-tightness	EN 1026: 600 Pa / EN 12207: class 4
Water tightness	EN 1027: 600 Pa / EN 12208: class 9a
Resistance to varying load	EN 12211: 600 Pa (=P2), strength 1800 Pa. EN 12210: class 3
Acoustic values	36 dB with insulated glass type 8-20-6.6.2/ 36 dB with sandwich panel 40 mm
Important	To satisfy guarantee conditions opening light must be closed automatically during rain and high winds (> 14 m/s). Installation of a rain sensor and wind speed meter is therefore essential