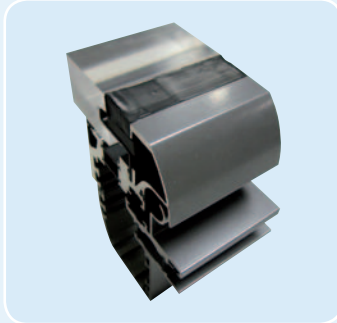


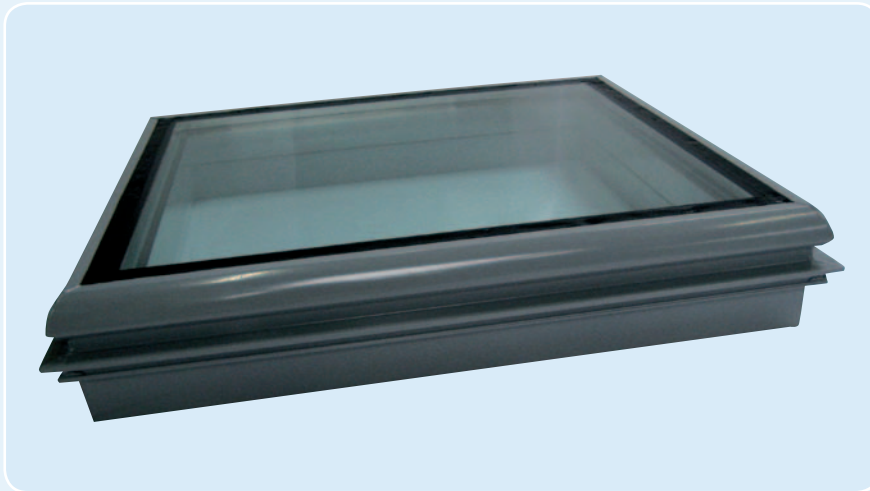


COXDOME Brakel® Lumera



Aesthetic (fire)ventilation window

Like the Luma, the Lumera is a high-quality architectural (fire) ventilation window. As a ventilation window with slim profiles and controls that are hidden in the frame, the Lumera actually is a combination of the Luma and the Ventria. The Lumera was especially designed for structural glass roofs with a small incline.



Designs

The Lumera is a ventlight that can be mounted at an angle of 0-90°. The opening angle of the window in relation to the base is variable up to a maximum of 90°. As a result the Lumera is suitable for both day-to-day ventilation and fire ventilation. The Lumera consists of cold bridge-free aluminium profiles ensuring that a high insulation value is attained. Although the Lumera is usually supplied with insulated glass, uninsulated glass (or some alternative panel) is also possible on request. Delivery, installation and sealing of the (glazed) panel can be carried out by third-parties on site or by Brakel in the factory.

The Lumera is designed with an eye for detail and is therefore ideally suited for use in buildings with very stringent aesthetic requirements. Examples of this are the concealed controls and the glass fixing, which is not visible from the outside. If required, the Lumera can be anodised or powder-coated (in any RAL colour).

Controls

For opening and closing the Lumera is fitted with one or two 24 Vdc chain motors. The controls can be designed to be fail-safe using batteries. A 230 Vac control is also possible. Gas springs can also be used to support the motors.

Flanges

The standard flange thickness is 28 mm and can be increased as required. There are two standard flange widths, namely 30 mm or 50 mm. Various customer-specific requirements with regard to flanges can be implemented on demand.

External appearance

Other than in its standard rectangular shape the Lumera is also available in triangular or trapezium shapes.

Dimensions and specifications:

- height: 300 to 2000 mm
- width: 600 to 3000 mm
- surface area: maximum 3.5m²
- glass thickness: maximum 37 mm
- glass: fitted with recessed frame
- glass weight: maximum 55 kg/m²
- seals: two double seals around using EPDM rubbers
- total profile height: 169 mm

Regulations

The system has been tested in accordance with EN 12101-2.

