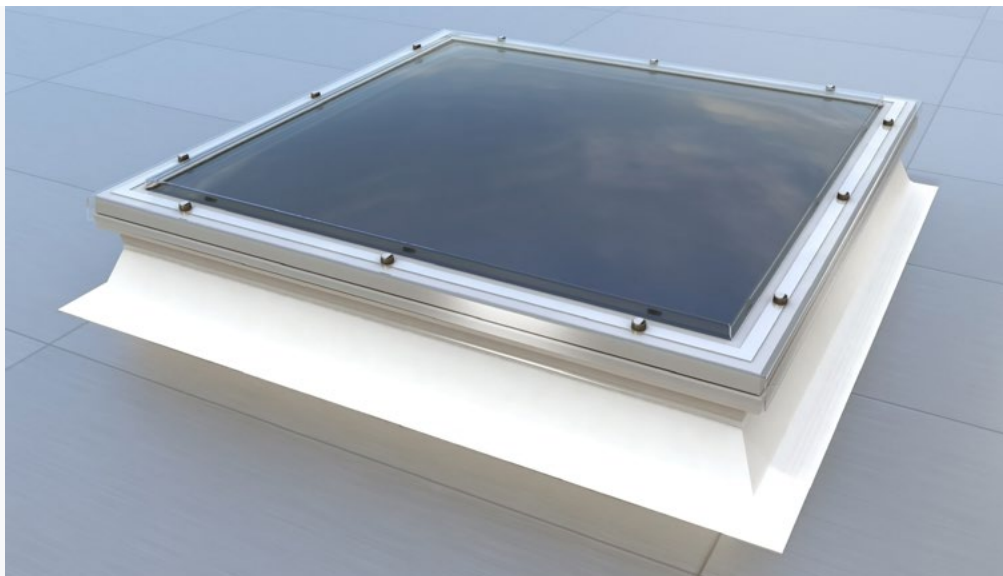


Williaam Cox Mark 3 Renovate



Product Overview

Replace all intro content with the following;
The Williaam Cox Mark 3 Renovate Range is a retro-fit dome designed to suit a wide range of existing upstands. It has a 70mm or 100mm flange that enables it to be fitted to existing upstands of varying dimensions. It is available in single, double or triple glazed domes and is ideal for the refurbishment projects or repair work



Application

The Williaam Cox Mark 3 Renovate range is a high quality, universal rooflight system.

The range is based on insulated uPVC Upstands, of varying heights with double / triple / quadruple skin polycarbonate glazing.

- Various glazing options available which provide excellent thermal efficiency.
- A quality, economical Part L compliant system.
- Security fixings supplied as standard.
- Complies to current BS476 fire rating Class B Non Fragile to ACR: M 2006.
- Suitable for any roofing application.
- Maintenance free UV stable uPVC construction.



Williaam Cox offers an **extensive range of rooflight options**.
Please speak to our sales department to discuss your requirements

Standard Rooflights

Williaam Cox Mark 3 Renovate



Specification

Manufacturer	Williaam Cox Ltd., Cloverhill Industrial Estate, Clondalkin, Dublin Ph: +353 (0)1 4605400, Email: admin@williaamcox.ie		
Product Ref	Williaam Cox Mark 3 Renovate		
Type	Low rise curved profile glazing Opening Options: Fixed/ Ventilated/ Manual Opening/ Powered Opening		
Sizes	<ul style="list-style-type: none">• 450mm x 450mm• 600mm x 600mm• 600mm x 900mm• 600mm x 1200mm• 600mm x 1500mm• 750mm x 750mm• 900mm x 900mm• 900mm x 1200mm• 900mm x 1500mm• 1050mm x 1050mm• 1050mm x 1500mm• 1200mm x 1200mm• 1200mm x 1500mm• 1200mm x 1800mm• 1200mm x 2400mm• 1350mm x 1350mm• 1500mm x 1500mm• 1800mm x 1800mm• 1950mm x 1800mm• 2100mm x 1800mm• 2250mm x 1800mm• 2400mm x 1800mm <p>More sizes available including rectangular dimensions.</p>		
Kerb	Rigid Multiwall PVC kerb with 150mm Membrane termination point		
Glazing	Outer glazing to be 3mm Polycarbonate glazing with co-extruded UV protection in various options Tint options: Clear / Diffused / Bronze / Opal Fire rating: Class B-s1, dO to BS EN 13501-1:2002 Non-Fragile Class B to ACR [M] 001:2005		
Other information:	U value up to 0.9 W/m2K possible		