

Williaam Cox Kingspan Estra



Product Overview

SHEV Application



Manufacturer	Kingspan (www.kingspan.com)
Type	Williaam Cox glass louvred ventilator, type Kingspan Estra
Description	Natural louvred ventilator, suitable for SHEV ventilation purposes and air supply
Operation	Single action pneumatic cylinder (P-FS) / single action pneumatic cylinder with bleed valve (PBFS)/ 24Vdc spindle motor (M24)
Frame	Thermally separated
Louvres	Single plane toughened glass, all louvers (glass thickness 8/10 mm; *** pieces)
Flange sizes (w x l)	*** x *** mm (identical)
Aerodynamic flow	*** m ²
Installation	In glass wall construction / in timber frames
Protection	To match glass wall construction / enamel finish with *** layer polyester powder coating, layer thickness *** mu, in standard RAL colour (group ***)
Acoustic values	19 dB with insulated glass type 5-15-4
Test	EN 12101-2
Important	This ventilator is not 100% wind and water tight

Smoke Ventilators

Williaam Cox Kingspan Estra

Product Overview

SHEV Application



Manufacturer	Kingspan (www.kingspan.com)
Type	Williaam Cox glasss louvred ventilator, type Kingspan Estra
Description	Natural louvered ventilator, suitable for shev ventilation purposes and air supply
Operation	Manual operation (hand spindle or lever) double action pneumatic cylinder (p2) / single action pneumatic cylinder (p-fs) /24vdc spindle motor (m24) /24vdc spindle motor + transformer / rectifier (m230)
Frame	Thermally separated
Louvres	Single plane toughened glass, all louvers (glass thickness 8/10 mm; *** pieces)
Flange sizes (w x l)	*** x *** mm (identical)
Aerodynamic flow	*** m ²
Installation	In glass wall construction / in timber frames
Protection	To match glass wall construction / enamel finish with *** layer polyester powder coating, layer thickness *** mu, in standard ral colour (group ***)
Important	This ventilator is not 100% wind and water tight
Special Feature	The louvers are equipped with a safety-release which detaches the louver mechanism to prevent any personal injury if the louvers become jammed



Williaam Cox offers an **extensive range of smoke ventilator options**.
Please speak to our sales department to discuss your requirements

Smoke Ventilators

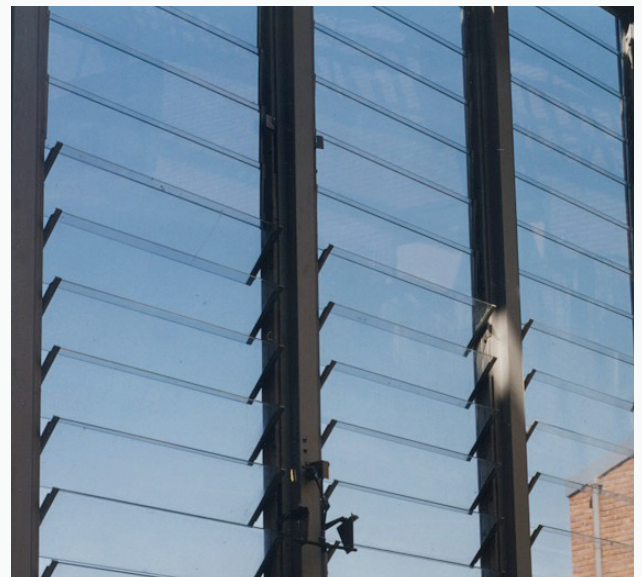
Williaam Cox Kingspan Estra

Product Overview

SHEV Application



Manufacturer	Kingspan (www.kingspan.com)
Type	Williaam Cox glass louvred ventilator, type Kingspan Estra
Description	Natural louvred ventilator, suitable for shev ventilation purposes and air supply
Operation	Single action pneumatic cylinder (p-fs) / single action pneumatic cylinder with bleed valve (pbfs)/ 24vdc spindle motor (m24)
Frame	Thermally separated
Louvres	Plain/solar control insulated glass in aluminium frame (glass thickness 24mm; (**pieces) / insulated sandwich panel (**pieces)
Flange sizes (w x l)	*** x *** mm (identical)
Aerodynamic flow	*** m ²
Installation	In glass wall construction / in timber frames
Protection	To match glass wall construction / enamel finish with *** layer polyester powder coating, layer thickness *** mu, in standard ral colour (group **)
Acoustic values	19 Db with insulated glass type 5-15-4
Test	En 12101-2



Williaam Cox offers an **extensive range of smoke ventilator options**.
Please speak to our sales department to discuss your requirements



Williaam Cox Ltd, Cloverhill Industrial Estate,
Clondalkin, Dublin 22, Ireland

+353 (0)1 460 5400

admin@williamcox.ie

www.williamcox.com

Smoke Ventilators

Williaam Cox Kingspan Estra

Product Overview

SHEV Application



Manufacturer	Kingspan (www.kingspan.com)
Type	Williaam Cox glass louvred ventilator, type Kingspan Estra
Description	Natural louvred ventilator, suitable for ventilation purposes and air supply
Operation	Manual operation (hand spindle or lever) double action pneumatic cylinder (p2) / single action pneumatic cylinder (p-fs) / 24vdc spindle motor (m24) / 24vdc spindle motor + transformer / rectifier (m230)
Frame	Thermally separated
Louvres	Plain/solar control insulated glass in aluminium frame (glass thickness 24mm; ***pieces) / insulated sandwich panel (***pieces)
Flange sizes (w x l)	*** x *** mm (identical)
Aerodynamic flow	*** m ²
Installation	In glass wall construction / in timber frames
Protection	To match glass wall construction / enamel finish with *** layer polyester powder coating, layer thickness *** mu, in standard ral colour (group ***)
Acoustic values	19 Db with insulated glass type 5-15-4
Test	The louvers are equipped with a safety-release which detaches the louver mechanism to prevent any personal injury if the louvers become jammed